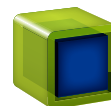
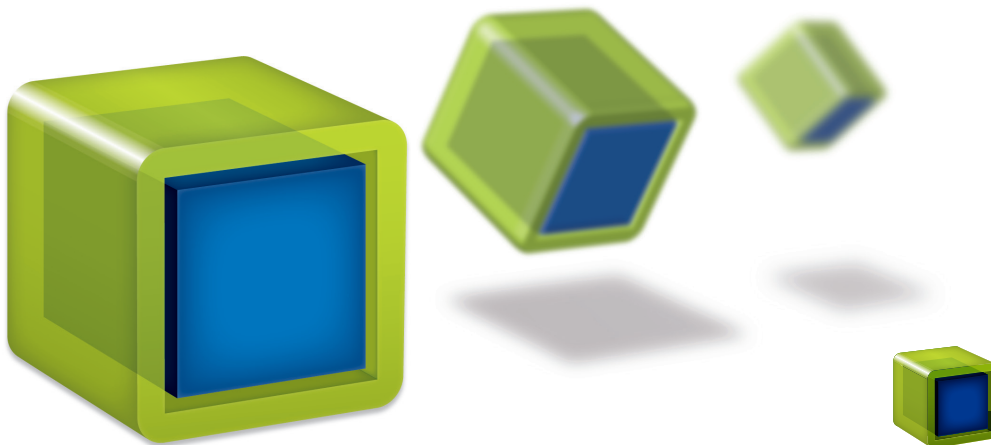
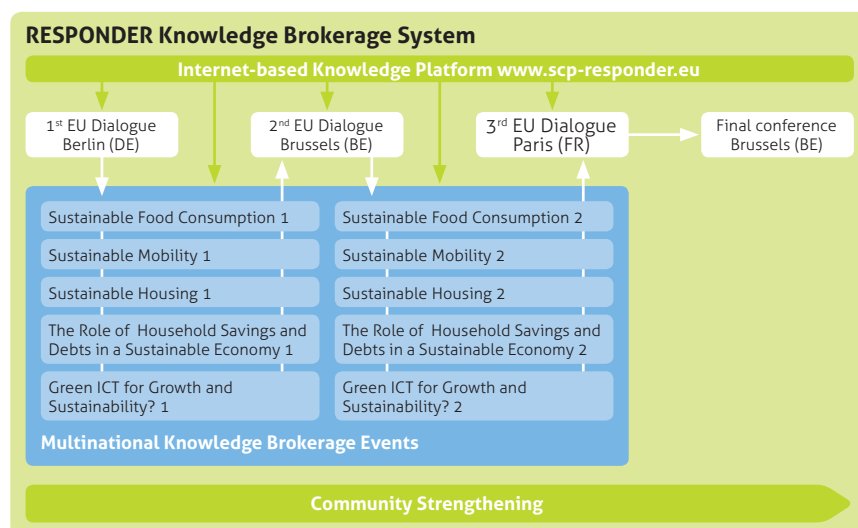


RESPONDER – Linking Research and Policy Making for Managing the Contradictions of Sustainable Consumption and Economic Growth



RESPONDER
Linking SCP and Growth Debates

The RESPONDER knowledge brokerage system



SAVE THE DATE

19–21 October 2011: 1st EU Dialogue on Sustainable Consumption and Economic Growth, Berlin (DE)

26–27 January 2012: Sustainable Food Consumption 1, Lisbon (PT)

21–23 March 2012: Sustainable Mobility 1, Bratislava (SK)

28–30 March 2012: Sustainable Housing 1, Barcelona (ES)

24–25 May 2012: The Role of Household Savings and Debts in a Sustainable Economy 1, London (UK)

30 May – 1 June 2012: Green ICT for Growth and Sustainability? 1, Vienna (AT)

5 – 7 Sept 2012: 2nd EU Dialogue on Sustainable Consumption and Economic Growth, Brussels (BE)

December 2012–April 2013: 2nd round of Multinational Knowledge Brokerage events focusing on pathways and options

September 2013: 3rd EU Dialogue on Sustainable Consumption and Economic Growth, Paris (FR)

April/May 2014: RESPONDER conference on managing the contradictions of sustainable consumption and economic growth, Brussels (BE)

RESPONDER – Contact and Partners

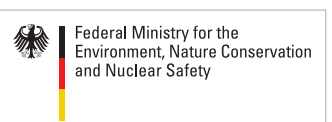
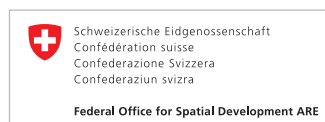
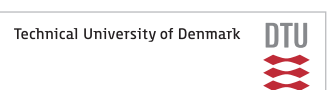


Project coordinator:

Dr. André Martinuzzi,
Research Institute for Managing Sustainability

Vienna University of Economics and Business
Franz-Klein-Gasse 1, 1190 Vienna, Austria
+43 (0) 1 313 36 46 98, andre.martinuzzi@wu.ac.at

WWW.SCP-RESPONDER.EU



Get involved in RESPONDER

Whether you are a policy maker, a researcher, a CSO or business representative, getting involved in RESPONDER will help you expand your existing networks and achieve greater public visibility while dealing with two of the most important issues in sustainable development policies which are also at the heart of the Europe 2020 strategy: sustainable consumption and economic growth.

Policy makers

- experience innovative forms of knowledge brokerage;
- gain easy access to cutting-edge research findings in sustainable consumption and economic growth;
- network with policy makers, an internationally rewarded research group and top-scholars all over Europe.

Researchers

- gain insights into the rationality of policy makers;
- display your own expertise and expand your outreach;
- develop demand-oriented and innovative insights for elaborating new research questions.

Civil society and business sector representatives

- gain access to a proven methodology for knowledge brokerage;
- contribute to increased policy coherence.

Join the RESPONDER community today by registering at

www.scp-responder.eu

Submit your questions and evidence on the platform, participate in the debates and attend the RESPONDER events.

The RESPONDER Project

Objective: managing contradictions between sustainable consumption and economic growth

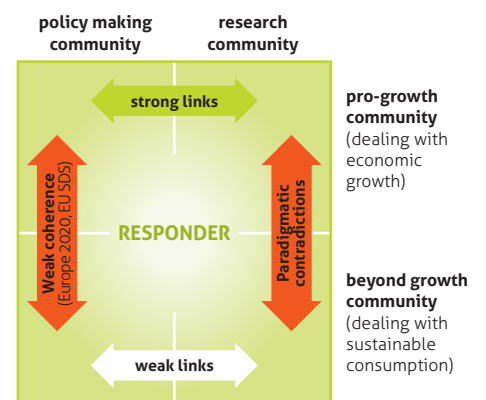
The overall aim of RESPONDER is to promote sustainable consumption by exploring novel ways of knowledge brokerage that help to improve the management of potential political, social and economic contradictions with economic growth. The project focuses on consumption decisions made by private households, considering their rationalities, options and factors affecting their decision making, and focusing on the impacts of these decisions on sustainability and/or economic growth as well as viable policy options. To gain

an integrative perspective, RESPONDER will link research findings from a range of disciplines.

Challenge: linking four communities

The challenge of RESPONDER is to link four communities. Linking science and policy is already recognised as a challenge, as these social systems follow different rules and rationalities. RESPONDER faces an additional challenge, as it will have to improve the mutual understanding of what could be called the 'pro-growth community' and the 'beyond-growth community'. Therefore, the project will develop and implement a highly innovative knowledge brokerage system supporting a

structured dialogue between researchers and policy makers across Europe.



The RESPONDER Approach

Participatory systems mapping

Mutual understanding requires a systemic approach: RESPONDER will carry out participatory systems mapping, a methodology that has successfully been used in several research-based decision-support projects. So called 'system maps' can support mutual understanding and knowledge transfer. They constitute the basis for systematising empirical findings, questioning different model assumptions, analysing the effects of different policy options and identifying new research questions. RESPONDER will use this methodology for the first time to link two high-stake policies with a high number of different actors' mindsets, paradigms and rationalities.

Community building

An innovative web-based information platform will support a structured dialogue between policy makers and researchers by offering an easy way of processing questions and answers. At European level, researchers and policy makers will jointly develop a system map showing the contradictions and synergies of sustainable consumption and economic growth. This generic map will be applied to regional and thematic contexts in a series of multinational knowledge brokerage events.

